

redcare

Roaming SIM – an intelligent choice

With intelligent network selection, Redcare's Roaming SIM firstly looks for a network with a signal above -75dBm , the equivalent to 4 out of 5 bars on your mobile phone. Not all roaming sims do this.

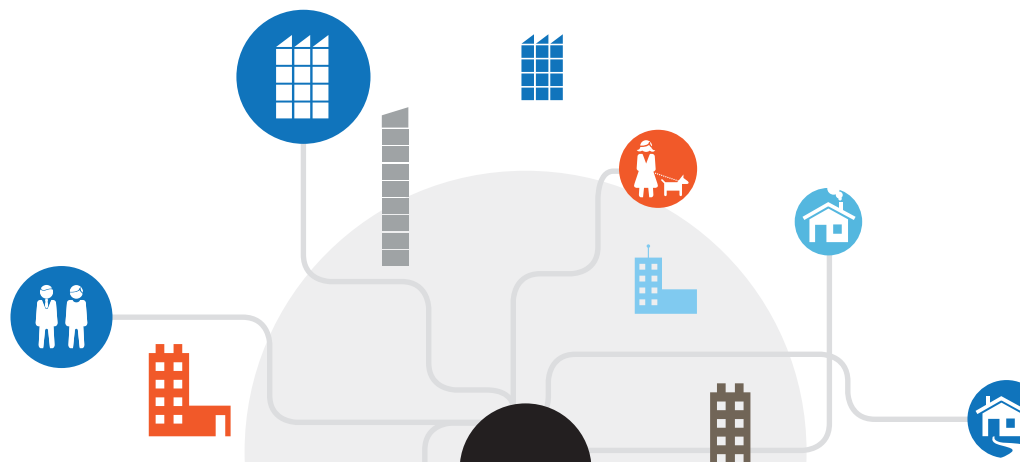
If that fails it chooses the strongest network available – No compromises.

- Intelligently selects a strong signal for premium performance
- Automatically connects to another signal in the event of failure for enhanced resilience
- Doesn't rely on a signal from a single operator – easier to install
- If the connected cell goes down, we automatically connect to other available cells with **no interruption** in service for your customer

Installer benefits

Easier installation: Forget problems associated with looking for a signal from a single operator, such as unavailability of service or a weak signal.

More resilient: Automatic connection to other networks means fewer communication failures, alarms, and service outages.



For further information, please contact your Regional Redcare Sales Manager, call us on **0800 800 628*** or email **redcare@bt.com**

*Calls to this number are free from BT landlines and BT payphones.
However, they are not free to call from mobile phones - the cost will vary between service providers.



Offices worldwide

The services described in this publication are subject to availability and may be modified from time to time. Services and equipment are provided subject to British Telecommunications plc's respective standard conditions of contract. Nothing in this publication forms any part of any contract.
© British Telecommunications plc 2011. Registered office: 81 Newgate Street, London EC1A 7AJ. Registered in England No. 1800000
PHME 62081 Designed by Howell Wong Costello